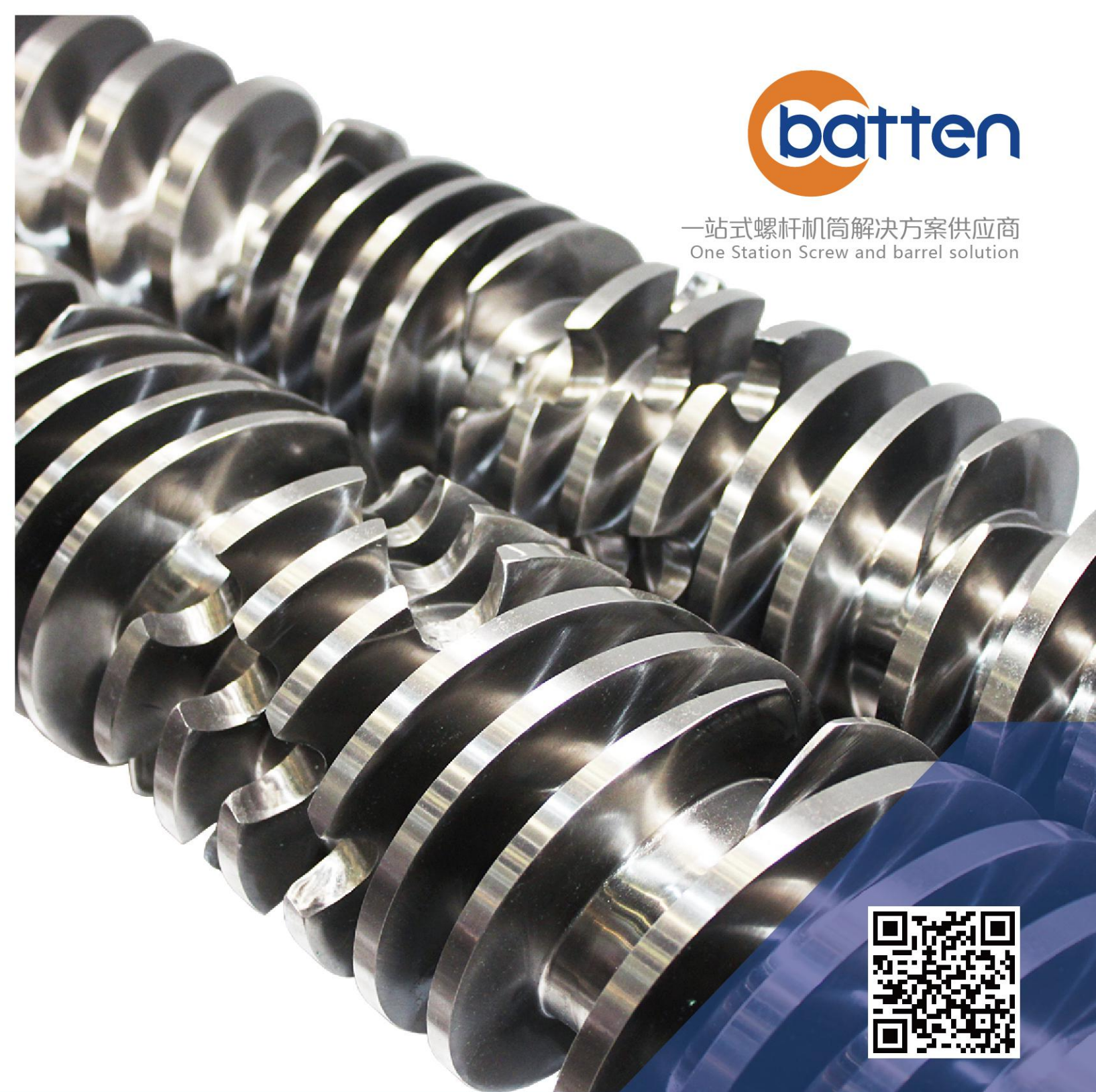


舟山巴顿机械科技有限公司
ZHOU SHAN BATTEN MACHINERY TECHNOLOGY CO.,LTD

舟山巴顿进出口有限公司
ZHOU SHAN BATTEN IMPORT AND EXPORT CO.,LTD



一站式螺杆机筒解决方案供应商
One Station Screw and barrel solution



+86 580-8015962 +86 580-8015961

sales@batten-machinery.com

www.batten-machinery.com

浙江省舟山市定海区双桥工业区临港2路一支路5号
No.5#, 1st Branch, Lingang 2nd road, Shuangqiao Industry Zone, Dinghai District, Zhoushan
City, Zhejiang Province, China

ZHOUSHAN BATTEN
MACHINERY TECHNOLOGY CO.,LTD.

舟山巴顿机械科技有限公司



BATTEN devote on high quality screw barrel and professional rapid service to bring more benefit to customers!

巴顿致力于优质的产品 & 专业迅速的服务，为客户赢得更多的效益！



公司简介

舟山巴顿机械科技有限公司专业从事螺杆、机筒制造。产品适用于各种国内外知名注塑机、挤出机、橡胶溶胶机。

公司拥有丰富的加工和设计经验，为客户提供氮化、镀铬、不锈钢、双金属堆焊、碳化钨表面喷涂等各种产品，以适应不同用途的需要。其中，高效吹膜及管材螺杆赢得客户好评。此外，公司承接测绘、设计、来图加工等业务以满足客户的需求。

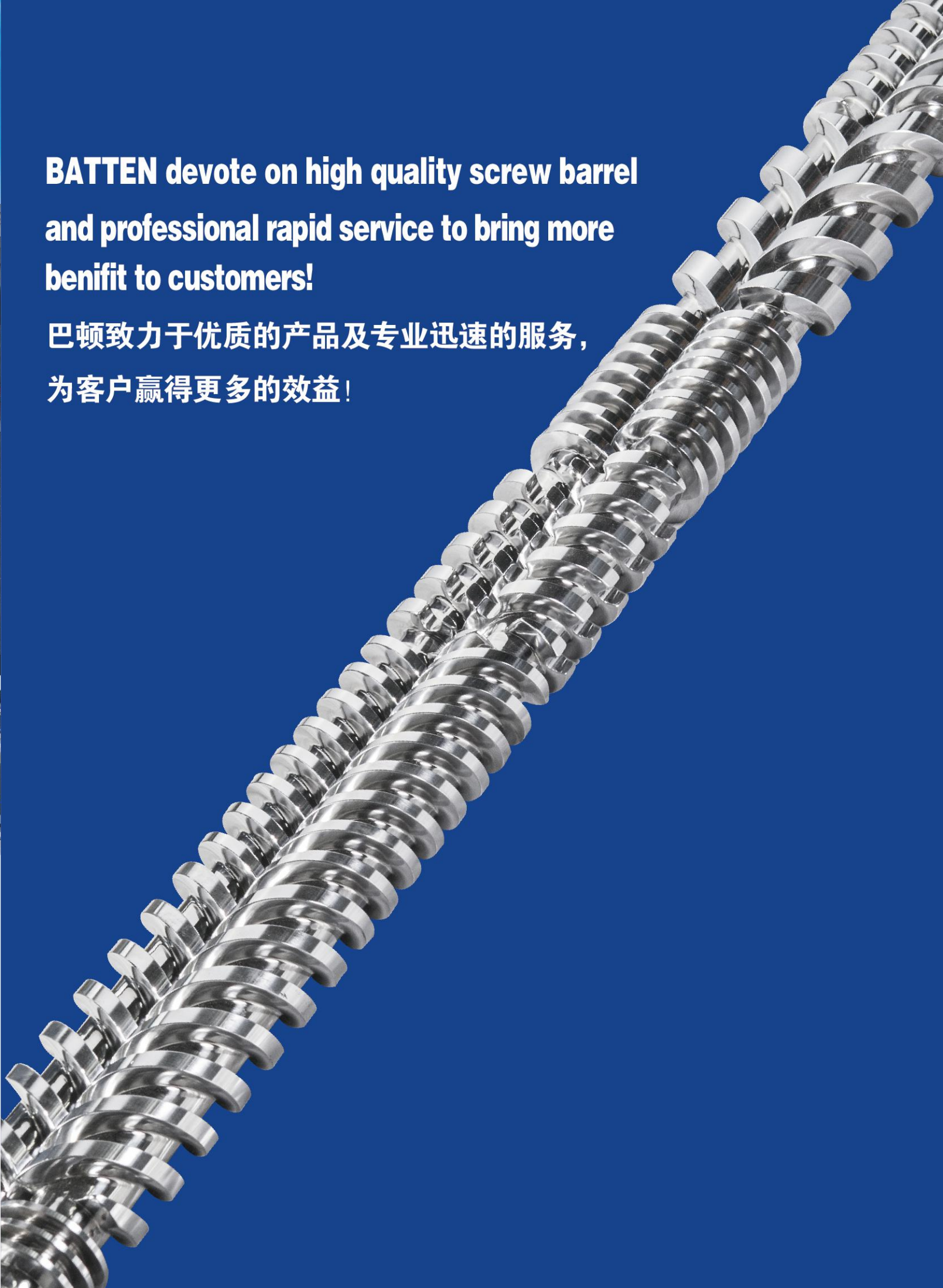
其姐妹公司舟山巴顿进出口有限公司，与国内多家生产商有良好的合作关系，现已成为专业的塑料机械及附件的供应商，年出口额超过3000万人民币。

Brief Introduction

Zhoushan Batten Machinery Technology Co.,Ltd is professional manufacture of screw barrel for plastic & rubber machinery.

Professional experience on processing and designing,we can supply nitrided,chrome plating,stainless steel,bimetallic and surface spraying technology treatment for different demands .Especially,high capacity single screw barrel for film & pipe win more customer.Other wise,we design and make products according with customer's drawing and present parts.

Zhoushan Batten Import and Export Co.,Ltd is a member of Batten Group,specializes in exporting kinds accessory parts of plastics machinery,and annual sales is more than 5 Million US dollar.



锥双螺杆机筒

CONICAL TWIN SCREW BARREL



+ 应用 Application

PVC 型材 (门窗)、木塑、发泡等 管材 造粒

PVC profile(Door & window) / WPC(PVC,PE) / PVC foam board / PVC pipe / PVC compound etc

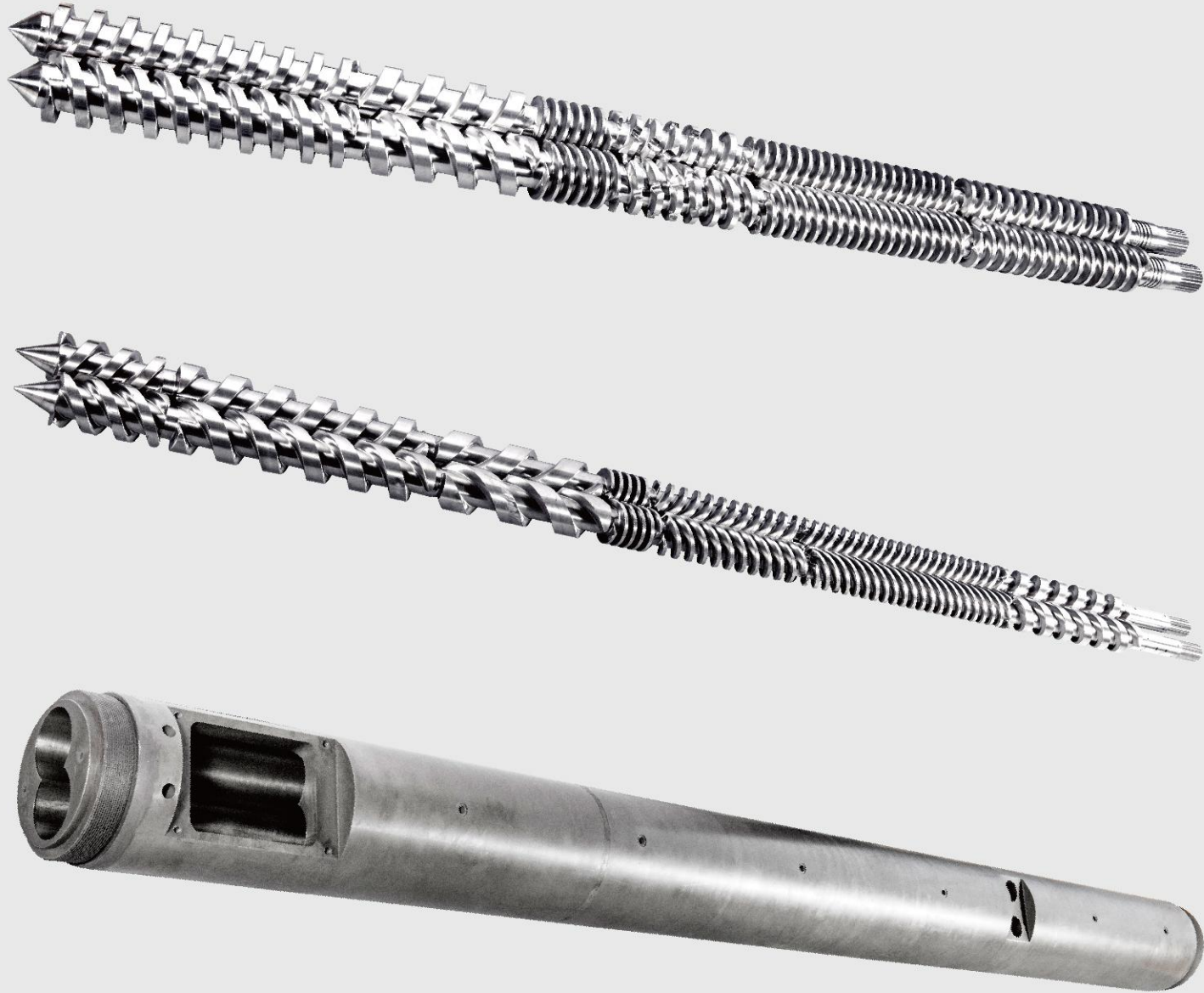


+ 规格 Specification

φ 35/75	φ 40/84	φ 45/90	φ 45/97	φ 45/100	φ 50/105	φ 51/105
φ 55/110	φ 55/120	φ 58/125	φ 60/125	φ 65/120	φ 65/132	φ 68/147
φ 72/151	φ 80/143	φ 80/156	φ 80/174	φ 92/188	φ 95/191	φ 105/216

平双螺杆机筒

PARALLEL TWIN SCREW BARREL



+ 应用 Application

PVC 型材 (门窗)、木塑、发泡等 管材 造粒

PVC profile(Door & window) / WPC(PVC,PE) / PVC foam board / PVC pipe / PVC compound etc



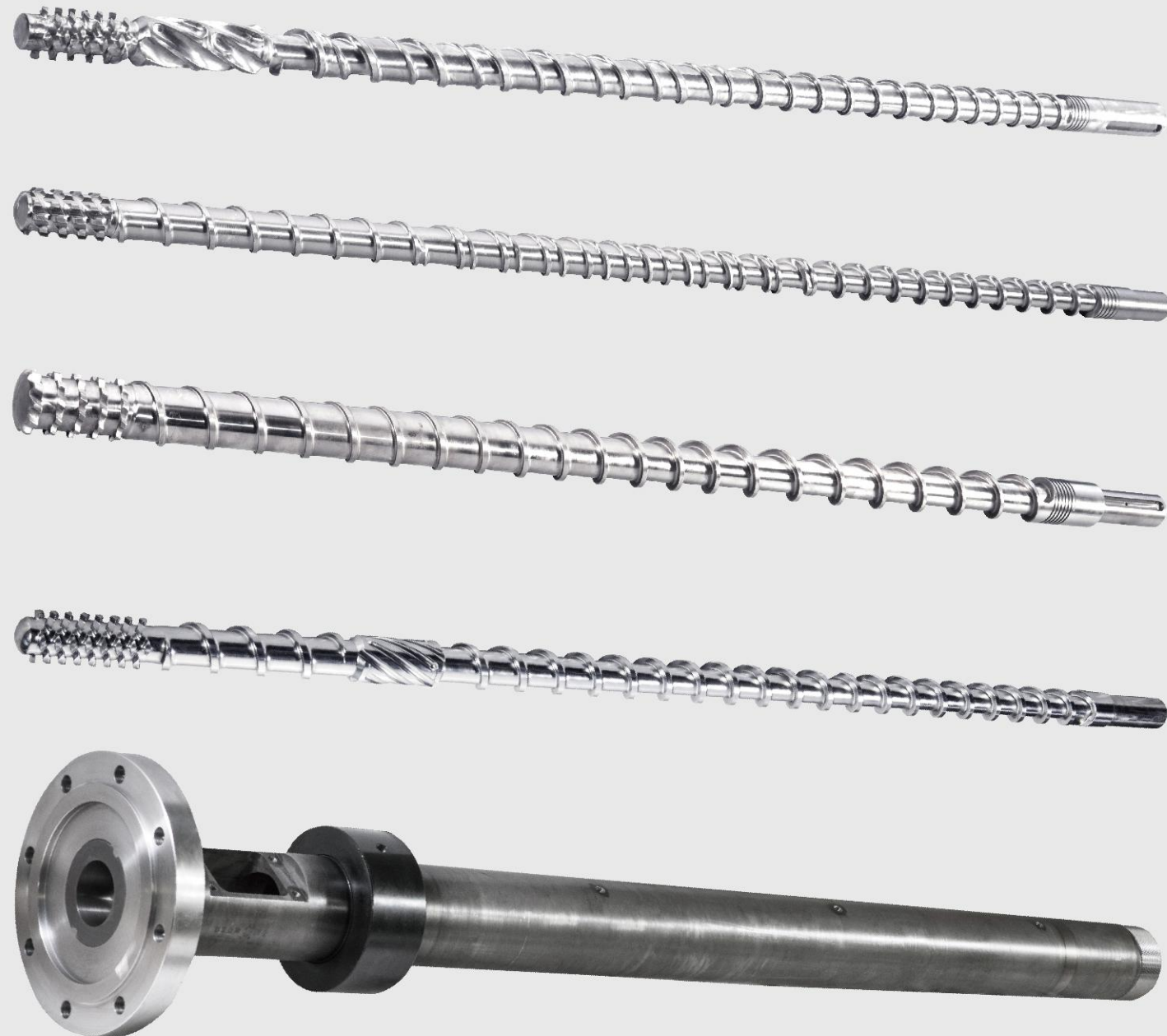
+ 规格 Specification

PX- ϕ 45/2- ϕ 150/2

长径比 (Length/Diameter Ratio) :L/D=18~40

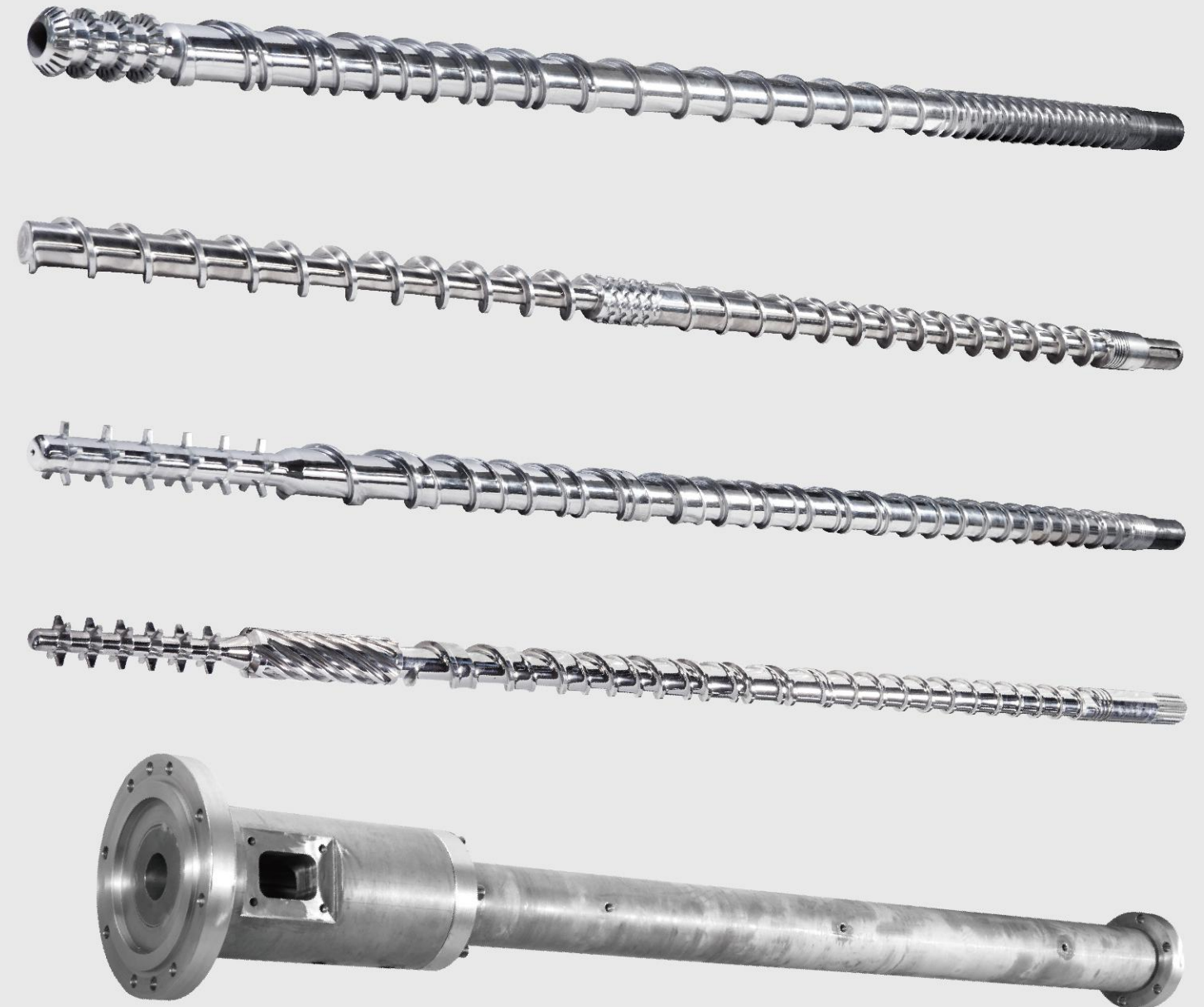
单螺杆机筒

SINGLE EXTRUSION SCREW BARREL



+ 应用 Application

吹膜、回收造粒、电缆、片材以及其他各种单螺杆挤出产品
Blowing film/Granulation/Wire & Cable/Sheet & Panel and other single screw extrusion products



+ 规格 Specification

直径(Diameter) ϕ 15mm- ϕ 300mm
最大长度 (Max.Length): \leq 10000mm

注塑机螺杆机筒

IMM SCREW BARREL



+ 应用 Application

家居用品 管件以及其他各种注塑制品

House holding / Pipe fittings and other plastic injection products



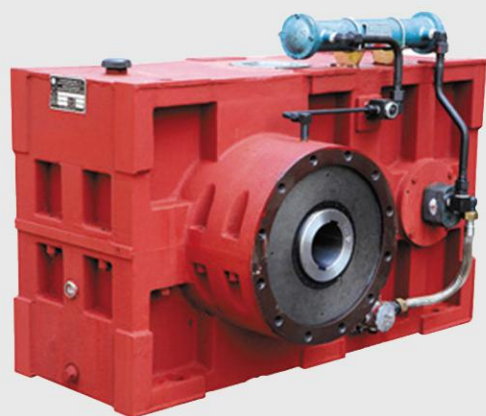
+ 规格 Specification

锁模力 (Mould Clamping Force) :250~40000KN, 注塑量 (Shot Weight) :30~80000g

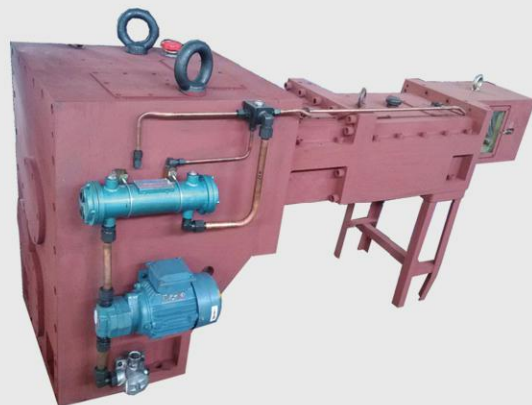
螺杆直径 (Diameter of screw) : ϕ 20mm ~ ϕ 300mm

螺杆可选用不同的螺杆头, 机筒可选用相应的喷嘴。

Screw can be matched with different heads, and barrel can be matched with different nozzles.



ZLYJ单螺杆齿轮箱
ZLYJ Series gearbox:single screw extruders



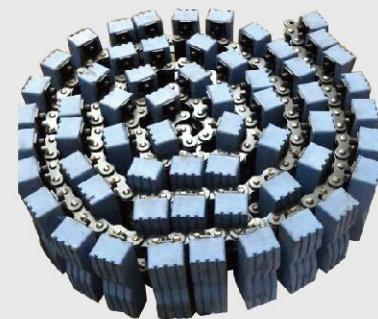
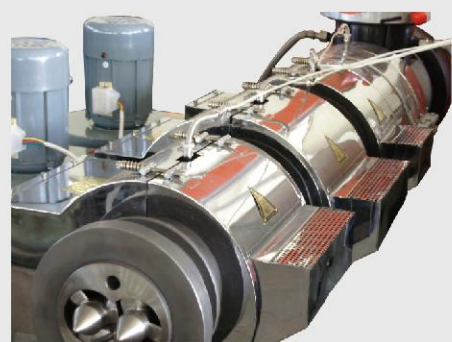
YPS平双螺杆机筒齿轮箱
YPS Series gearbox parallel twin screw extruders



SZ锥双螺杆齿轮箱：卧式，立式
SZ Series gearbox:Conical twin screw extruders:Horizontal type,Vertical type



模头、风环、旋转体、换网器、加热圈、风机
Die head,Air ring,Rotary device,Screen changer,Heater & Fans



牵引机链条 Haul Off Chains



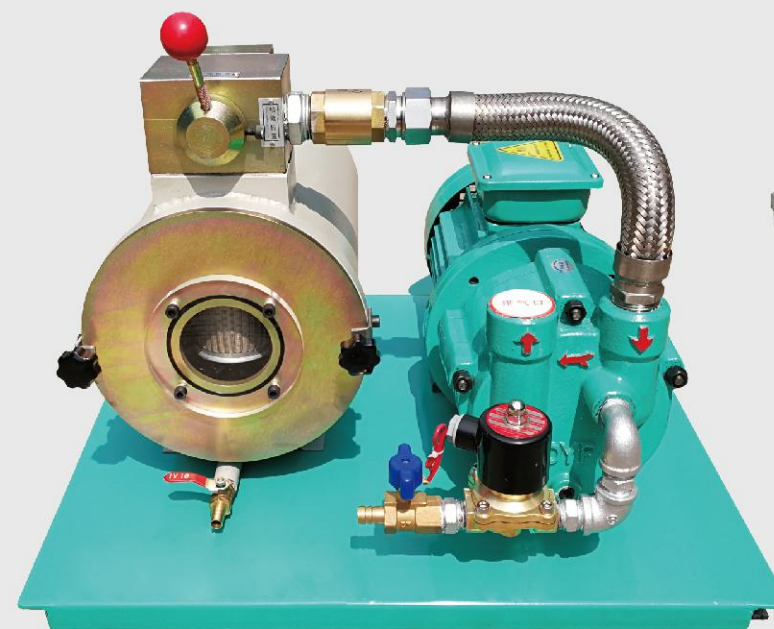
合流芯 Joint Core



大螺母、哈弗 Big nut, Clamps



定径套 Calibrator



真空系统 Vacuum Pump System



管材模头 Pipe Mold

+ 双合金机筒 Bimetallic barrel

种类 Type	特性 Feature	主要成分 Alloy Component	硬度 HRC	基本材质 Base Material
1	耐磨 Abrasion resistance	Fe+Ni+Cr+B	58-65	40Cr
2	耐腐蚀 Anti-corrosion	Ni+Cr+Co+B	50-58	40Cr
3	耐磨耐腐蚀 Abrasion resistance and Anti-corrosion	Ni+Cr+Co+Fe+B	56-65	40Cr
4	高耐磨耐腐蚀 High Abrasion resistance and Anti-corrosion	Ni+Cr+Wc+Co+B	58-67	40Cr

+ Treatment Process

Spray bimetallic layer Centrifugal casting bimetallic

Single barrel Full length bimetallic	Twin barrel Output zone bimetallic	Twin barrel Output zone bimetallic	Screw Full length bimetallic
合金层 Alloy layer	合金层 Alloy layer	合金层 Alloy layer	合金层 Alloy layer



+ Technical parameters

Alloy depth:0.8-2.0mm Alloy hardness:HRC56-65

材料 Material

38CrMoAla,DIN1.8550,SACM645,SKD61,42CrMo,40Cr

处理工艺 Treatment Process

调质 Quenched and Tempered

氮化 Nitriding

硬镀铬 Hard Chrome Plating

喷涂双合金 Spray Bimetallic Layer

高频淬火 High Frequency Quenching

内孔离心浇筑 Centrifugal Casting Bimetallic Inside

高温自然硬化 Nature Hardening

技术参数 Technical Specification

调质硬度: HB280-320 Hardness After Hardening & Tempering:HB280-320

氮化硬度: HV900-1000 Nitrided Hardness:HV900-1000

氮化深度: 0.45-0.8mm Nitrided Case Depth:0.45-0.8mm

氮化脆性: ≤二级 Nitrided Brittleness:≤2 Grade

表面粗糙度: Ra0.4 Surface Roughness:Ra0.4

螺杆直线度: 0.015mm Screw Straightness:0.015mm

镀铬硬度: HV≥950HV Chrome Hardness:HV≥950HV

镀铬层厚度: 0.05-0.10mm Thickness after chrome:0.05-0.10mm

合金深度: 0.8-2.0mm Alloy depth:0.8-2.0mm

双合金硬度: HRC56-65 Alloy hardness:HRC 56-65

